

## Ormskirk Paediatric Emergency Department Monthly Bulletin: July 2010 to June 2011

This bulletin provides a breakdown of all injury attendances at Ormskirk Paediatric Emergency Department (ED) between July 2010 and June 2011.<sup>1</sup>

Between July 2010 and June 2011 there were 5,627 ED attendances. Injury attendances peaked in May (n=577), with December (n=235) having the least number of injury attendances (**Figure 1**).

**Figure 2** illustrates injury attendances by gender. For all months there were more male (60%) injury attendances than female presenting at Ormskirk Paediatric ED.

**Figure 3** presents the age group of injury attendances. Across the whole year over two-fifths (41%) of injury attendances were made by people aged between 10 and 14 years.

**Table 1** details the injury group of injury attendances. The majority of injury attendances

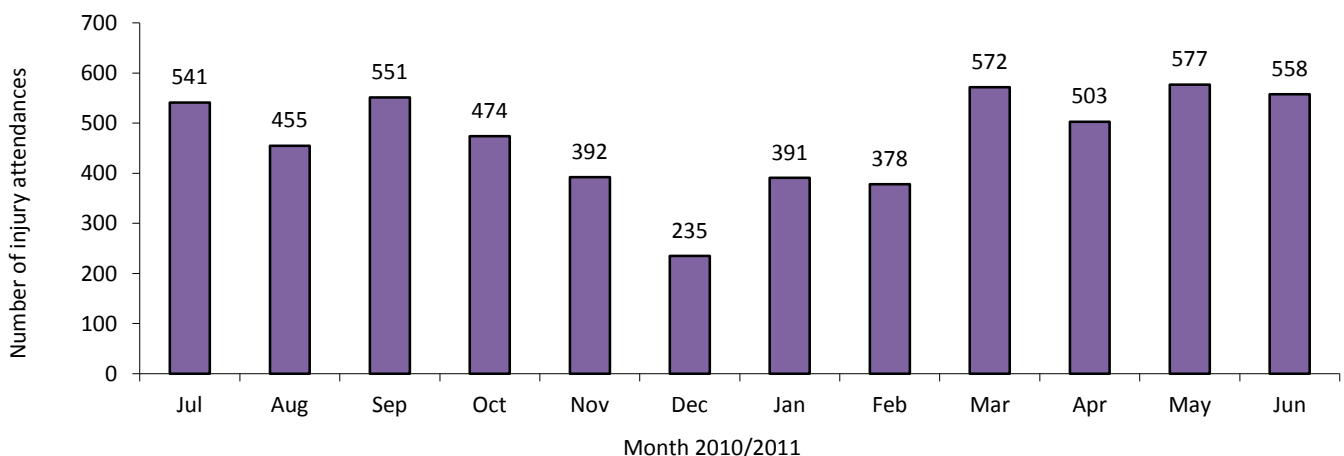
were classified as other injury (71%). Just over one-fifth (22%) were recorded as sports Injury and 4% road traffic collisions (RTCs).

**Table 2** illustrates the source of referral for patients presenting with injuries. The majority (93%) of injury attendees were recorded as other. **Table 3** presents injury attendances by location of incident. Nearly four in ten (37%) of all injury locations were recorded as in the home. **Table 4** shows the disposal method of injury attendances. Over seven in ten (72%) attendees were discharged requiring no follow-up.

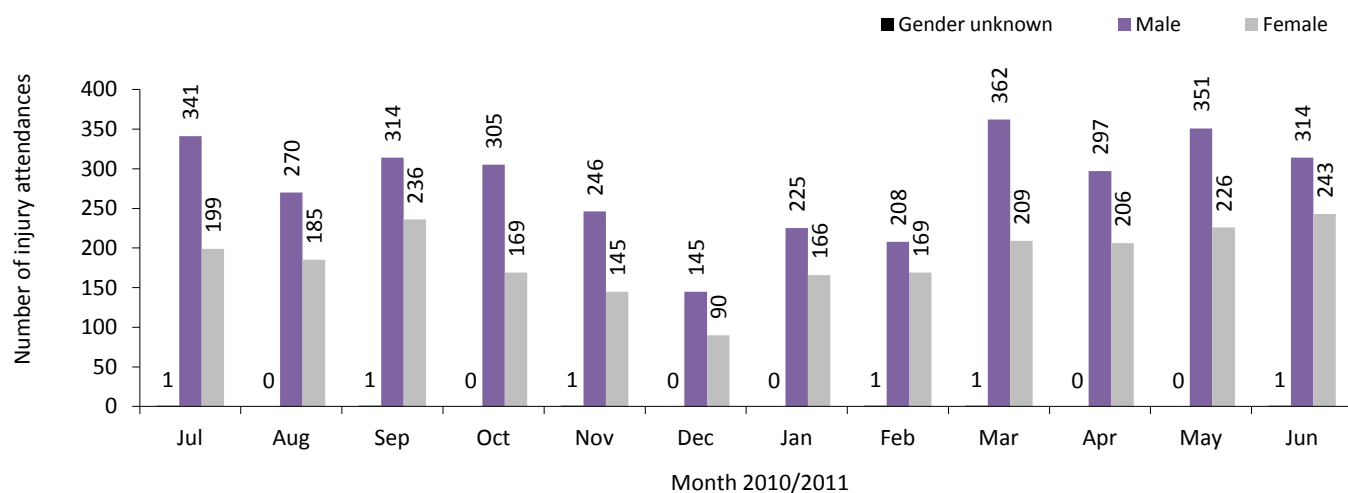
Assault attendees presenting at the Ormskirk ED between July 2010 and June 2011 were mainly male (77%) and the primary location of assault was in a public place (48%).

The majority of ED assault attendances were aged 5-14 years (n=50; 60%) and 40% were 15-29 (n=33).

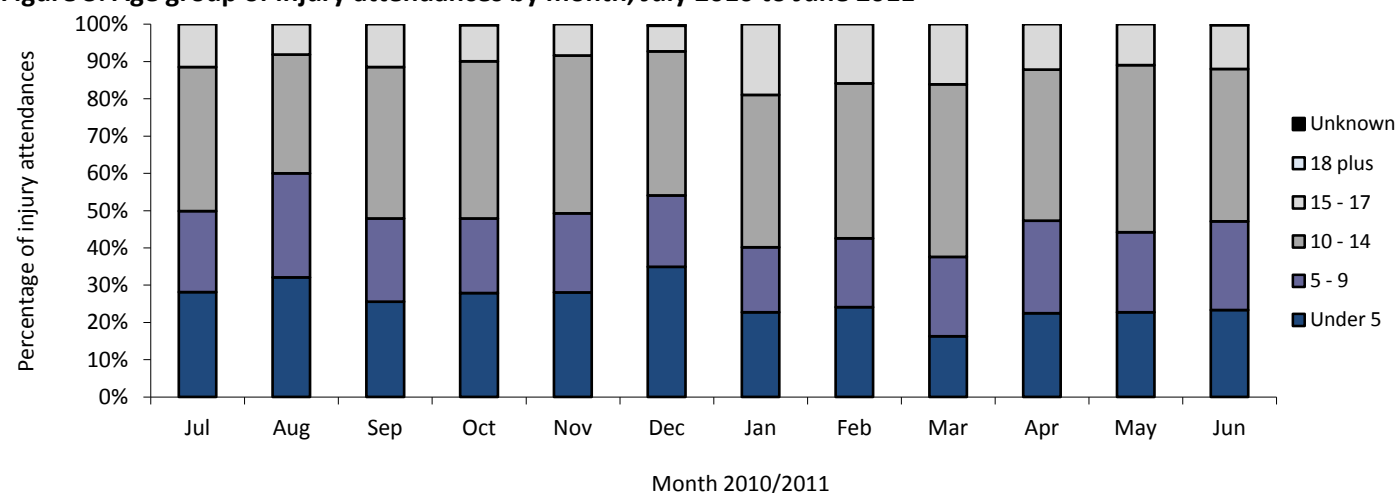
**Figure 1: Total number of injury attendances by month, July 2010 to June 2011**



**Figure 2: Gender of injury attendances by month, July 2010 to June 2011**



**Figure 3: Age group of injury attendances by month, July 2010 to June 2011**



**Table 1: Injury attendances by injury group and month, July 2010 to June 2011<sup>234</sup>**

Injury group	Jul	Aug	Sep	Oct	Nov	Dec	Jan	Feb	Mar	Apr	May	Jun	Total	%
Other injury	423	376	396	296	273	175	252	261	354	360	407	441	4012	71
Sports injury	85	44	123	140	88	29	114	93	196	113	128	86	1239	22
RTC	18	30	22	26	24	23	16	19	12	20	21	16	247	4
Assault	<12	***	***	<11	<6	<7	<7	***	<8	5	13	<13	<85	1
Deliberate self-harm	***	***	<7	***	***	***	***	***	***	5	8	***	<44	1
<b>Total</b>	<b>541</b>	<b>455</b>	<b>551</b>	<b>474</b>	<b>392</b>	<b>235</b>	<b>391</b>	<b>378</b>	<b>572</b>	<b>503</b>	<b>577</b>	<b>558</b>	<b>5627</b>	<b>100</b>

**Table 2: Injury attendances by source of referral and month, July 2010 to June 2011<sup>5</sup>**

Source of referral	Jul	Aug	Sep	Oct	Nov	Dec	Jan	Feb	Mar	Apr	May	Jun	Total	%
Other	493	426	507	435	361	212	363	349	554	470	544	514	5228	93
Health care provider: same or other	29	20	30	21	18	6	14	17	8	14	14	18	209	4
Emergency services	7	***	***	6	***	10	5	***	***	12	***	10	68	1
Self referral	8	***	***	7	***	***	5	***	***	6	7	***	58	1
Educational establishment	***	***	5	***	***	***	***	***	***	***	8	7	35	1
GP	***	***	***	***	5	***	***	***	***	***	***	***	22	0
Local authority social services	***	***	***	***	***	***	***	***	***	***	***	***	5	0
Police	***	***	***	***	***	***	***	***	***	***	***	***	***	0
<b>Total</b>	<b>541</b>	<b>455</b>	<b>551</b>	<b>474</b>	<b>392</b>	<b>235</b>	<b>391</b>	<b>378</b>	<b>572</b>	<b>503</b>	<b>577</b>	<b>558</b>	<b>5627</b>	<b>100</b>

**Table 3: Injury attendances by location of incident and month, July 2010 to June 2011**

Location	Jul	Aug	Sep	Oct	Nov	Dec	Jan	Feb	Mar	Apr	May	Jun	Total	%
Home	221	181	189	169	147	96	119	132	179	201	214	216	2064	37
Public place	171	223	200	150	105	72	130	127	181	220	196	162	1937	34
Educational establishment	83	5	97	87	95	52	113	102	182	51	131	120	1118	20
Other	66	46	<65	68	<45	15	29	17	30	31	36	60	<507	9
Work	0	0	***	0	***	0	0	0	0	0	0	0	<5	0
<b>Total</b>	<b>541</b>	<b>455</b>	<b>551</b>	<b>474</b>	<b>392</b>	<b>235</b>	<b>391</b>	<b>378</b>	<b>572</b>	<b>503</b>	<b>577</b>	<b>558</b>	<b>5627</b>	<b>100</b>

**Table 4: Disposal method of all injury attendances by month, July 2010 to June 2011**

Disposal method	Jul	Aug	Sep	Oct	Nov	Dec	Jan	Feb	Mar	Apr	May	Jun	Total	%
Discharged - no follow-up	339	306	403	361	313	181	310	283	410	342	407	401	4056	72
Referred to fracture clinic	75	60	70	51	24	20	39	41	70	69	77	80	676	12
Referred to other health care professional	40	32	28	20	23	18	20	21	30	32	36	31	331	6
Admitted to hospital bed	33	21	24	14	11	***	<9	12	15	24	18	17	201	4
Transferred to other health care provider	20	14	9	17	7	6	5	9	5	12	11	11	126	2
Discharged - follow up by other health care provider	14	15	7	***	***	***	***	***	7	7	17	10	88	2
Referred to other out-patient clinic	10	5	5	5	6	***	***	***	9	7	7	***	62	1
Referred to ED clinic	7	***	***	***	***	***	***	6	15	***	***	***	44	1
Left ED before being treated	***	***	***	***	***	***	***	***	10	6	***	***	40	1
Left ED - refused treatment	***	***	***	***	***	***	***	***	***	***	***	***	***	0
Other	***	***	***	***	***	***	***	***	***	***	***	***	***	0
<b>Total</b>	<b>541</b>	<b>455</b>	<b>551</b>	<b>474</b>	<b>392</b>	<b>235</b>	<b>391</b>	<b>378</b>	<b>572</b>	<b>503</b>	<b>577</b>	<b>558</b>	<b>5627</b>	<b>100</b>

Published October 2011

Johnathan Rooney (TIIG officer)

Centre for Public Health, Faculty of Health and Applied Social Sciences, Liverpool John Moores University

2nd Floor, Henry Cotton Campus, Liverpool, L3 2ET

Tel: 0151 231 4513 Email: [j.rooney@ljmu.ac.uk](mailto:j.rooney@ljmu.ac.uk)Website: [www.tiig.info](http://www.tiig.info) (please note all data requests should be made through the TIIG website)

<sup>1</sup> Previous reports include data from the Minor Injury Unit. These data are no longer housed by Ormskirk's information team but by the PCT and therefore cannot be included in this report.

<sup>2</sup> \*\*\* Please note that all numbers less than five have been suppressed in line with patient confidentiality and if there is only one number in a category then two numbers will be suppressed at the next level (e.g. <6) in order to prevent back calculations from totals.

<sup>3</sup> Due to low numbers firework injuries (n<5) have been included under the 'other injury' category.

<sup>4</sup> Please note percentages might not add to one hundred due to rounding.

<sup>5</sup> GP=general practitioner.